

LI

LUCE IMMOBILIARE

AGENCY — LIVORNO

VOLTERRA — TOSCANA

# BEAUTIFUL TYPICAL TUSCAN FARMHOUSE

€ 840.000

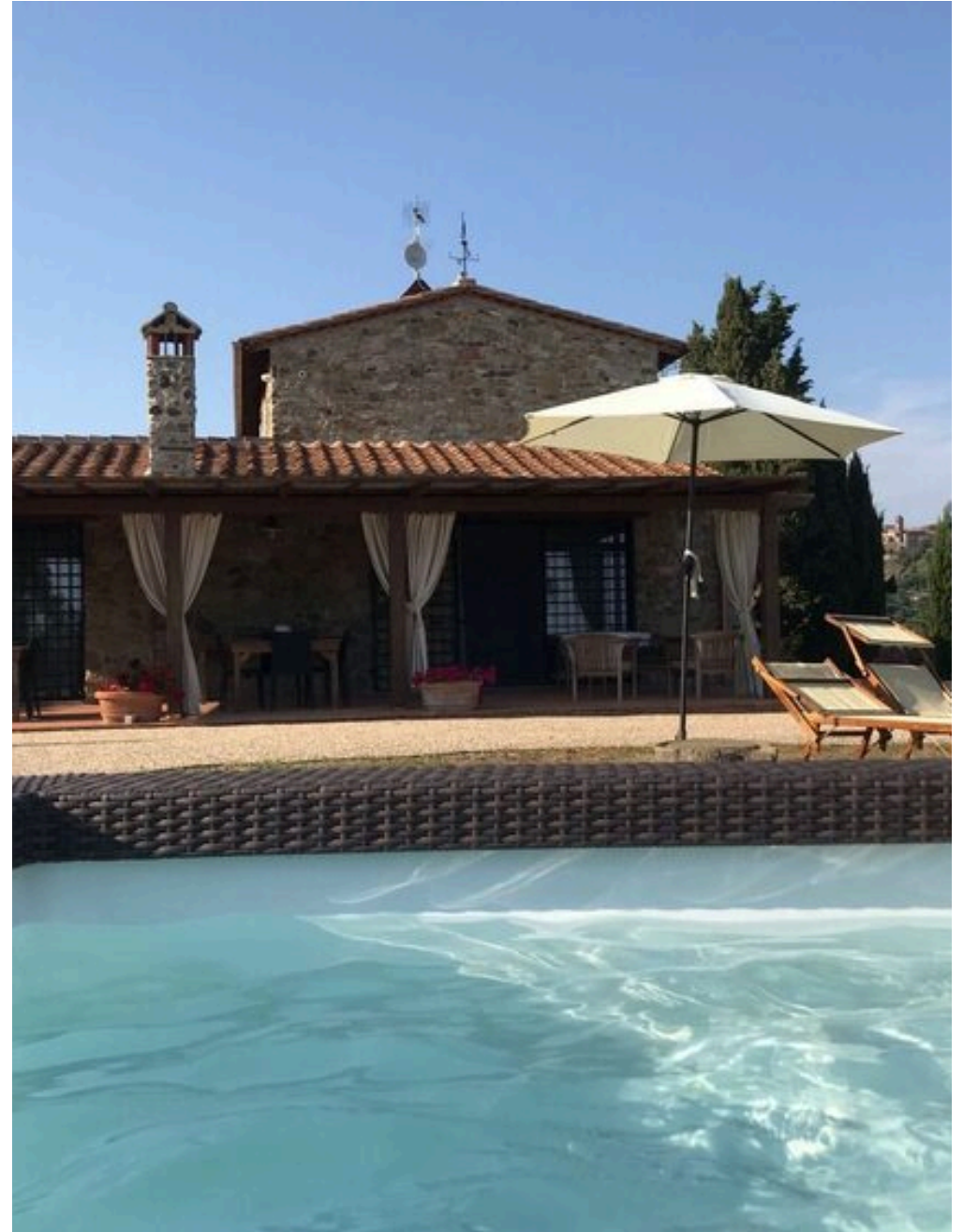
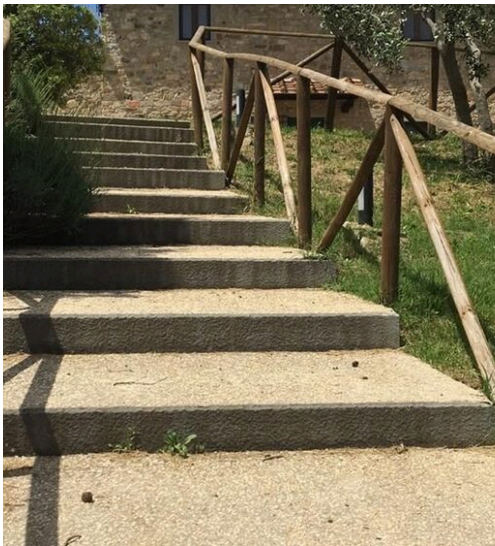
PRICE

220 m<sup>2</sup>

SQUARE METRES

5

ROOMS





## DESCRIPTION


# BEAUTIFUL TYPICAL TUSCAN FARMHOUSE


TUSCANY PRESSI VOLTERRA A few kilometers from a typical Tuscan village, there is this beautiful stone farmhouse completely renovated maintaining the characteristics of rustic Tuscan and using natural materials such as terracotta, stone and wood. The house that we offer you exclusively is spread over two floors and every overlook allows you to enjoy breathtaking views of the Tuscan hills. The entrance has remained the typical central one and overlooks on one side the living room divided by an arch with dining area where a door leads to a large bedroom with possibility of four beds and a bathroom; beyond the arch there is the sofa area with fireplace with a large window that leads to the large porch from which you can enjoy the view of the garden equipped with mini Jacuzzi pool and further porch with relaxation area. On the other side of

the entrance large kitchen with large fireplace and work area with a beautiful window that allows the view of the hills and the village. The basement serves as a pantry while a glass door allows to exit to the tiled garden where there is a capacious laundry and technical compartment with water softener and boiler. From the entrance the old stone stairs allow us to reach the second floor where there are two double bedrooms with each their own bathroom. The rooms have antique oak parquet floors and the ceilings are with beams, rafters and terracotta. The heating is underfloor heating. The property also has a land of about 14000 square meters where insist about 150 olive trees in production, fruit trees and a wooden structure, regularly stacked and with the possibility of extension as a shelter of the garden furniture and equipment.

 **220 m<sup>2</sup>**  
AREA

 **5**  
ROOMS

 **3**  
BATHROOMS

 **€ 840.000**  
PRICE

## FEATURES



EXCLUSIVE  
POSITION



LAND



HOT TUB



PANORAMIC  
VIEW



LI

LUCE IMMOBILIARE

## CONTACTS

### Book a visit

Contact us for more information  
or to schedule a viewing.



PHONE

3478644320



EMAIL

info@luceimmobiliare.com



ADDRESS

Via del Littorale 111/A, LIVORNO, LI