



Agenzia Immobiliare Jappelli

AGENCY — ABANO TERME

ABANO TERME — VENETO

Commercial, office, craft, residential building

€ 785.000

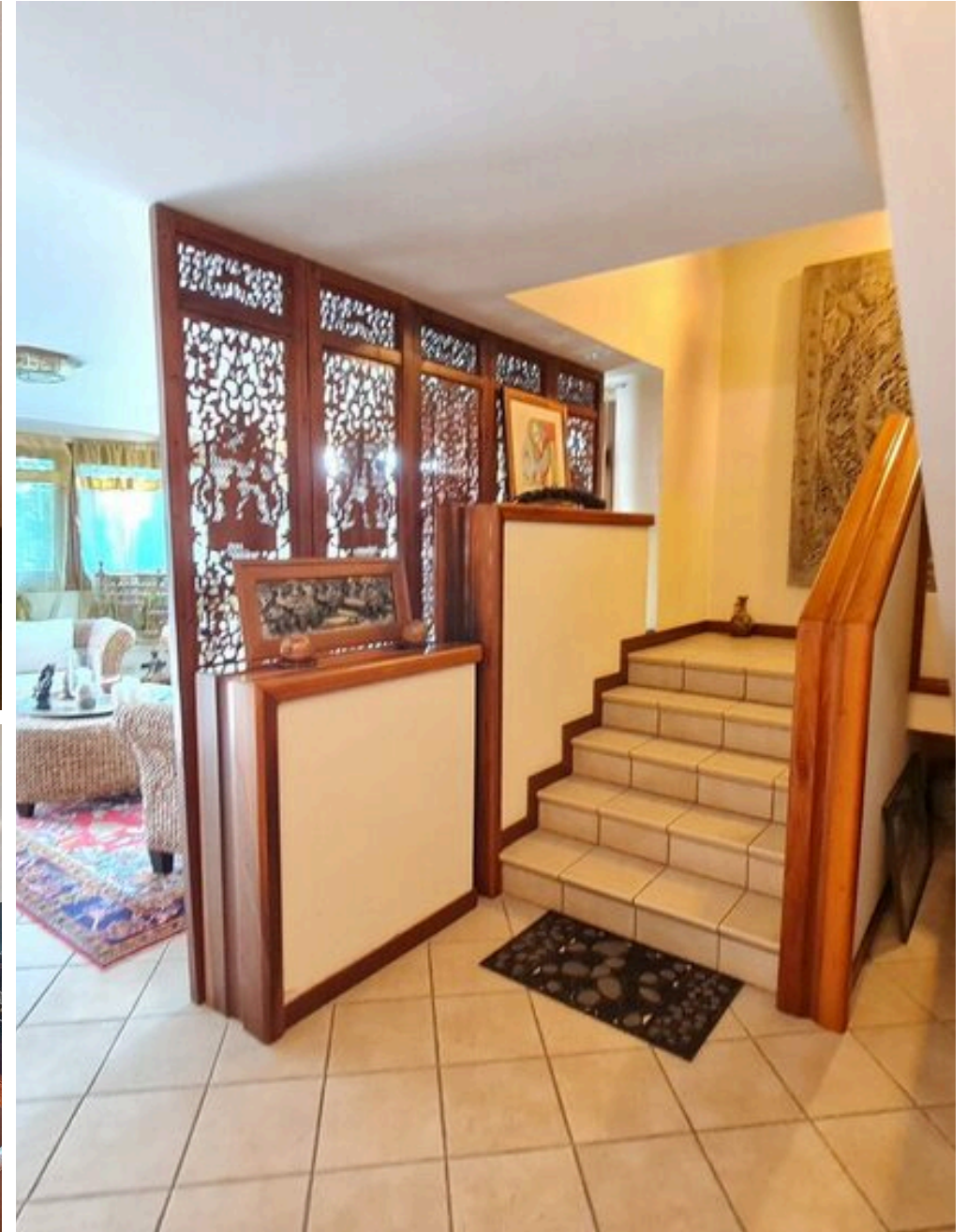
PRICE

750 m²

SQUARE METRES

5

ROOMS



DESCRIPTION

Commercial, office, craft, residential building

Real estate building with directional, commercial, artisanal and residential use, located in residential neighborhood San Lorenzo in Abano Terme. With an area of about 750sqm, on a lot of about 2,000sqm, the building has large interior spaces ideal for production activities, warehousing, logistics, an office area equipped with all the necessary comforts for administrative management, in addition, it offers pertinent outdoor areas that facilitate the loading and unloading of vehicles. The spaces are divided into: - ground floor of about 340sqm by entrance/waiting room, large space used as an operational area for commercial/directional use and services, - mezzanine floor of about 75sqm with storage rooms, office, server rooms, - on the second floor the directional part with show room of about 170sqm and services,

in the adjacent half apartment of about 170sqm with independent entrance from the ground floor, laundry and storage on the mezzanine floor. Air conditioning and heating in all rooms. The section dedicated to residential about 170sqm consists of a large entrance on the ground floor and passing through the mezzanine floor where we find large laundry and storage rooms, it leads to an elegant living room of generous size with separate and furnished kitchen, terrace panoramic view Euganean Hills, huge master bedroom with en suite bathroom and walk-in closet, hallway that leads to the two additional bedrooms, second bathroom and separate windowed service. Included in the price kitchen furnishings, custom-made furniture, air conditioning. Area directly located close to major arteries and tangentials.

 **750 m²**
AREA

 **6**
BATHROOMS

 **5**
ROOMS

 **€ 785.000**
PRICE



Agenzia Immobiliare Jappelli

CONTACTS

Book a visit

Contact us for more information or to schedule a viewing.

 **PHONE**
+390498666706

 **EMAIL**
info@jappelli.it

 **ADDRESS**
Piazza Sacro Cuore 26, Abano Terme, Padova