



THE REMAX COLLECTION LUXURY HOUSE

AGENCY — PALERMO

PALERMO — SICILIA

PRESTIGIOUS PENTHOUSE TWO LEVELS LARGE TERRACE IN ART NOUVEAU BUILDING

€ 990.000

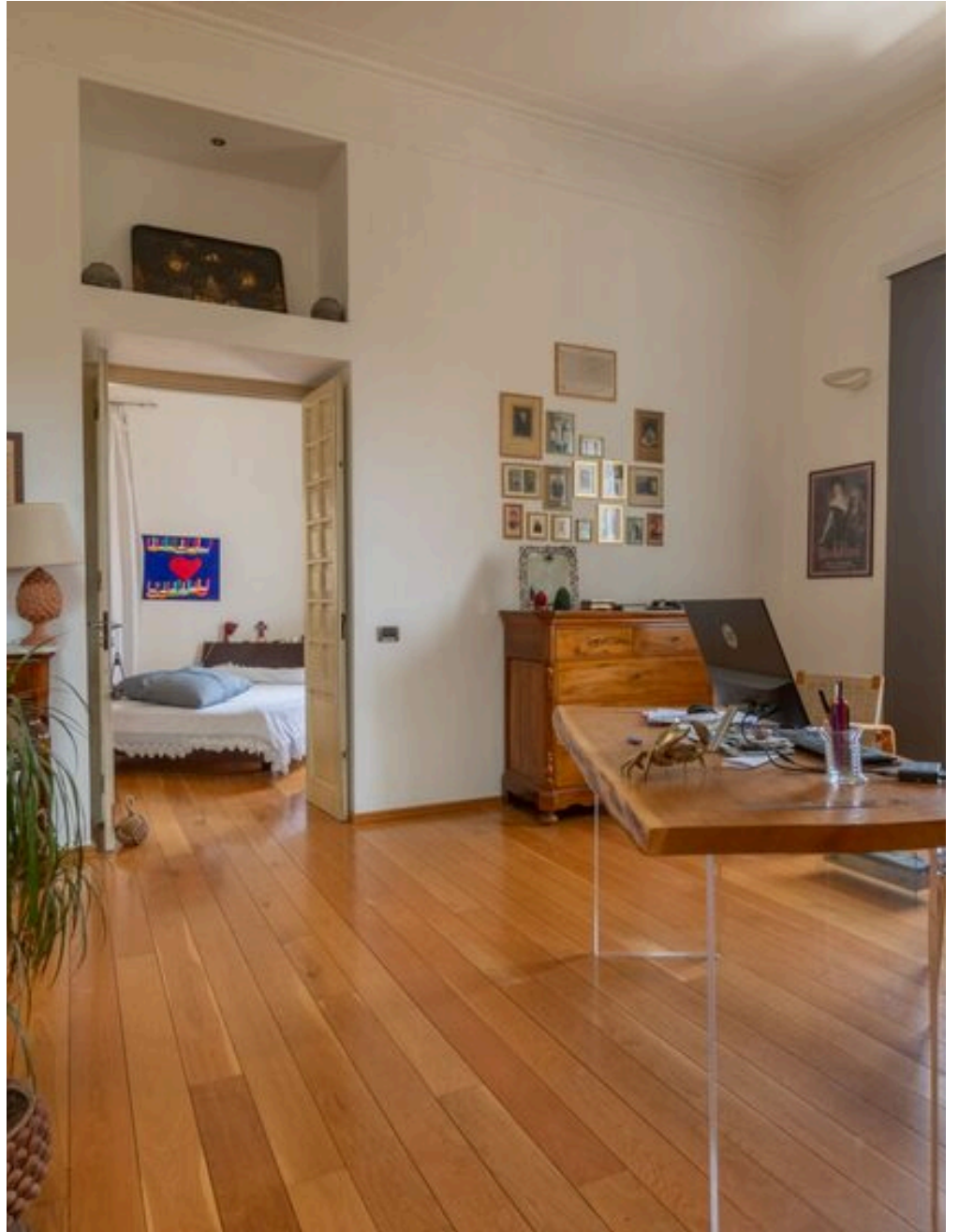
PRICE

345 m²

SQUARE METRES

5

ROOMS





DESCRIPTION


PRESTIGIOUS PENTHOUSE TWO LEVELS LARGE TERRACE IN ART NOUVEAU BUILDING


Prestigious penthouse in Art Nouveau building in the Notarbartolo area exactly via Nunzio Morello corner via Domenico Costantino. With exclusive view of the garden of "Villa Pottino".The property, with year of construction 1900, is in excellent condition following a major renovation and is completely free to the deed.The interior spaces, divided on 330 square meters of floor space, are distributed over 14 rooms, including a large living room, 4 bedrooms and 5 bathrooms.The dwelling is equipped with natural gas central heating system, with radiators or radiant panels, and

fixtures/windows with double glass and aluminum shutters, as well as air conditioning system.The attic is partially furnished, with large built-in closets, kitchen with central island in masonry, recessed spotlights in the false ceilings and step markers in the staircase.From the balcony and terrace, of about 70 square meters, you can enjoy a splendid panoramic view of "Villa Pottino" and the city.The property is also equipped with an elevator and parquet flooring for an extra touch of elegance.Its northwest exposure ensures excellent brightness throughout the day.

 **345 m²**
AREA

 **5**
ROOMS

 **5**
BATHROOMS

 **€ 990.000**
PRICE

FEATURES



WIDE SPACES



HISTORIC BUILDING



LUXURIOUS FINISHES



EXCLUSIVE POSITION



TERRACE



THE REMAX COLLECTION
LUXURY HOUSE

CONTACTS

Book a visit

Contact us for more information
or to schedule a viewing.



PHONE
091342873



EMAIL
mbenanti@remax.it



ADDRESS
Via Quintino Sella 73, Palermo, Palermo