

FOR SALE



Symphonya Luxury Real Estate

AGENCY — NARDÒ

NARDÒ — PUGLIA

Magnificent 16th Century Palace in the Historic Centre

€ 578.000

PRICE

780 m²

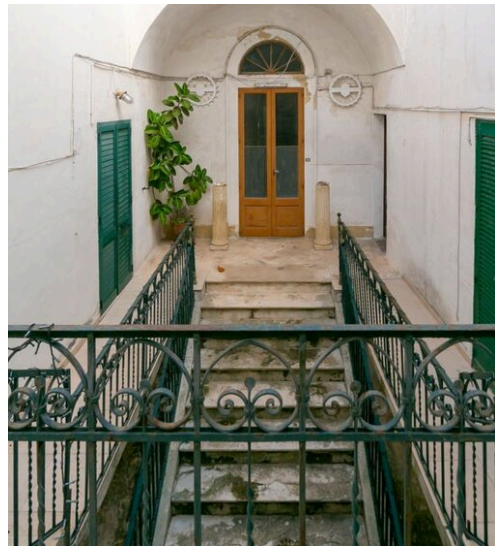
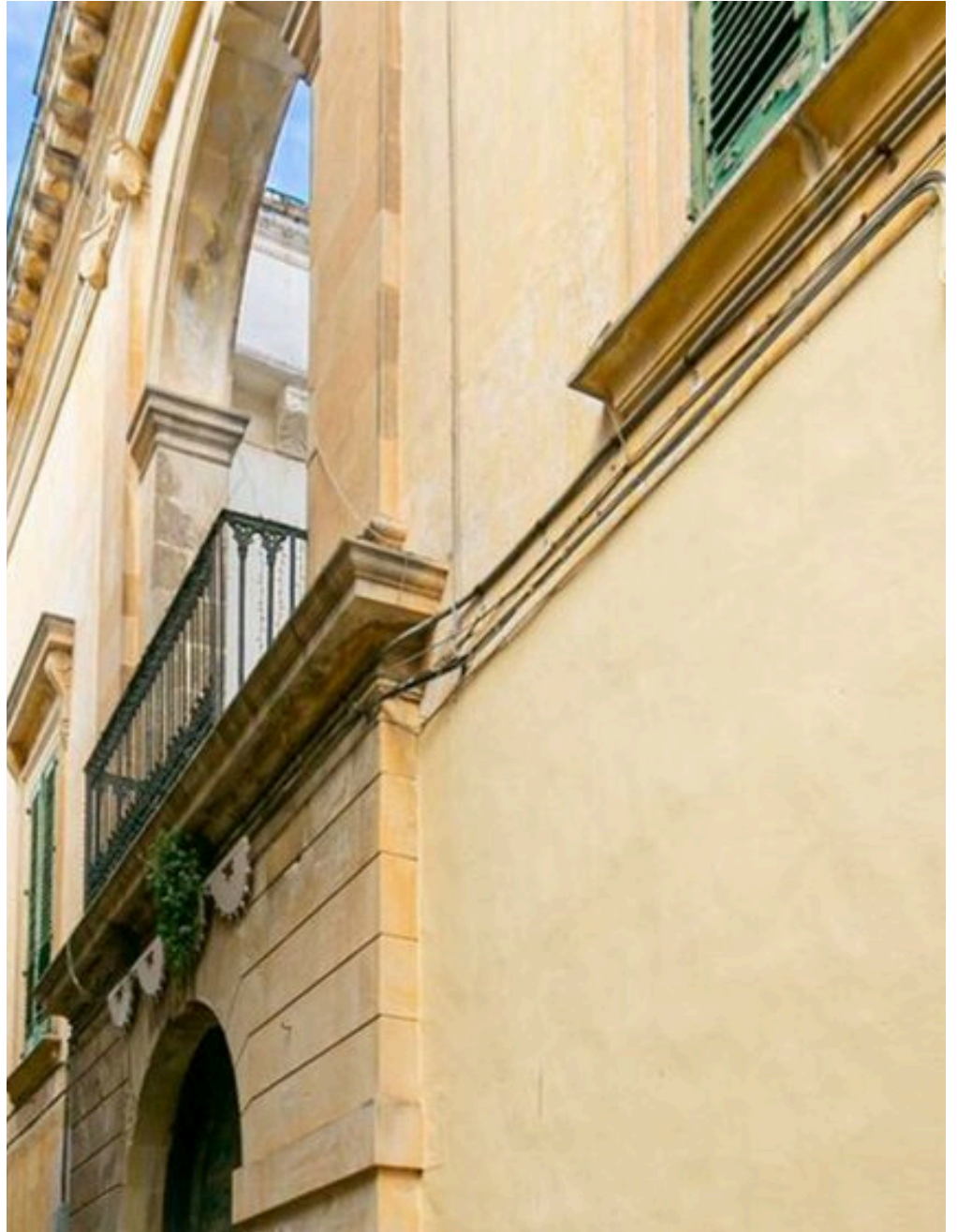
SQUARE METRES

5

ROOMS



The Spaces





DESCRIPTION


Magnificent 16th Century Palace in the Historic Centre


Located in the heart of the historic center of Nardò along Via Giuseppe Sambiasi, this extraordinary 16th-century historic palace represents an authentic expression of Salento architecture, preserving centuries of history and tradition. Accessible through the courtyard of a prestigious period building, the property extends over multiple levels for a total surface of approximately 780 sqm. Passing through the entrance doorway one is welcomed by the evocative atmosphere of the internal courtyard, a quiet and elegant space that introduces the historic character of the residence. From here a majestic staircase leads to the main residential floor and to a distinctive circular balcony overlooking the narrow street below, offering charming views of the historic urban fabric. The main residential unit, located on the first floor, features spacious and refined interiors enhanced by magnificent star-vaulted ceilings, original cementine floors and historic wooden doors that reflect the prestige of the residence. Upon entering, a generous distribution space leads to a bright living room, the

heart of the home, harmoniously connected to the other rooms. Among them stands a hall of timeless charm once used for convivial gatherings, along with a sleeping area composed of several bedrooms including one with a private bathroom. A long corridor connects the living area to a spacious panoramic rooftop terrace from which the city's main monuments can be admired, with the possibility of restoring the historic suppinne structures to further expand the building's volume. The ground floor offers additional spaces of remarkable historic value including an ortale courtyard leading to four star-vaulted rooms, one of which is currently used as a garage with direct access to a small street parallel to Via Sambiasi, a rare and highly valuable feature in the historic center. From street level there is also access to a fascinating semi-basement level of approximately 200 sqm composed of vaulted rooms once used as food storage areas that today preserve an unexpected historical element: ancient prison cells that testify to the historic importance of the palace within the feudal system....

 **780 m²**
AREA

 **5**
ROOMS

 **3**
BATHROOMS

 **€ 578.000**
PRICE

FEATURES



HISTORIC
BUILDING



EXCLUSIVE
POSITION



PANORAMIC
VIEW



Symphonia Luxury Real
Estate

CONTACTS

Book a visit

Contact us for more information
or to schedule a viewing.



PHONE
3805848928



EMAIL
info@symphonyaluxury.com



ADDRESS
Corso Vittorio Emanuele II 15, Nardò, LE