



Agenzia Immobiliare Jappelli

AGENCY — ABANO TERME

ABANO TERME — VENETO

Exclusive Duplex Penthouse

€ 590.000

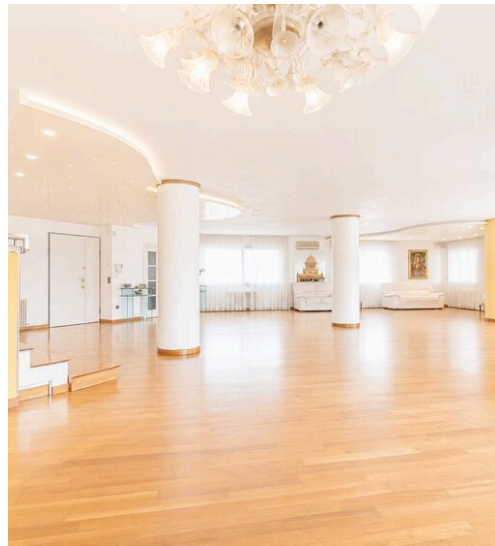
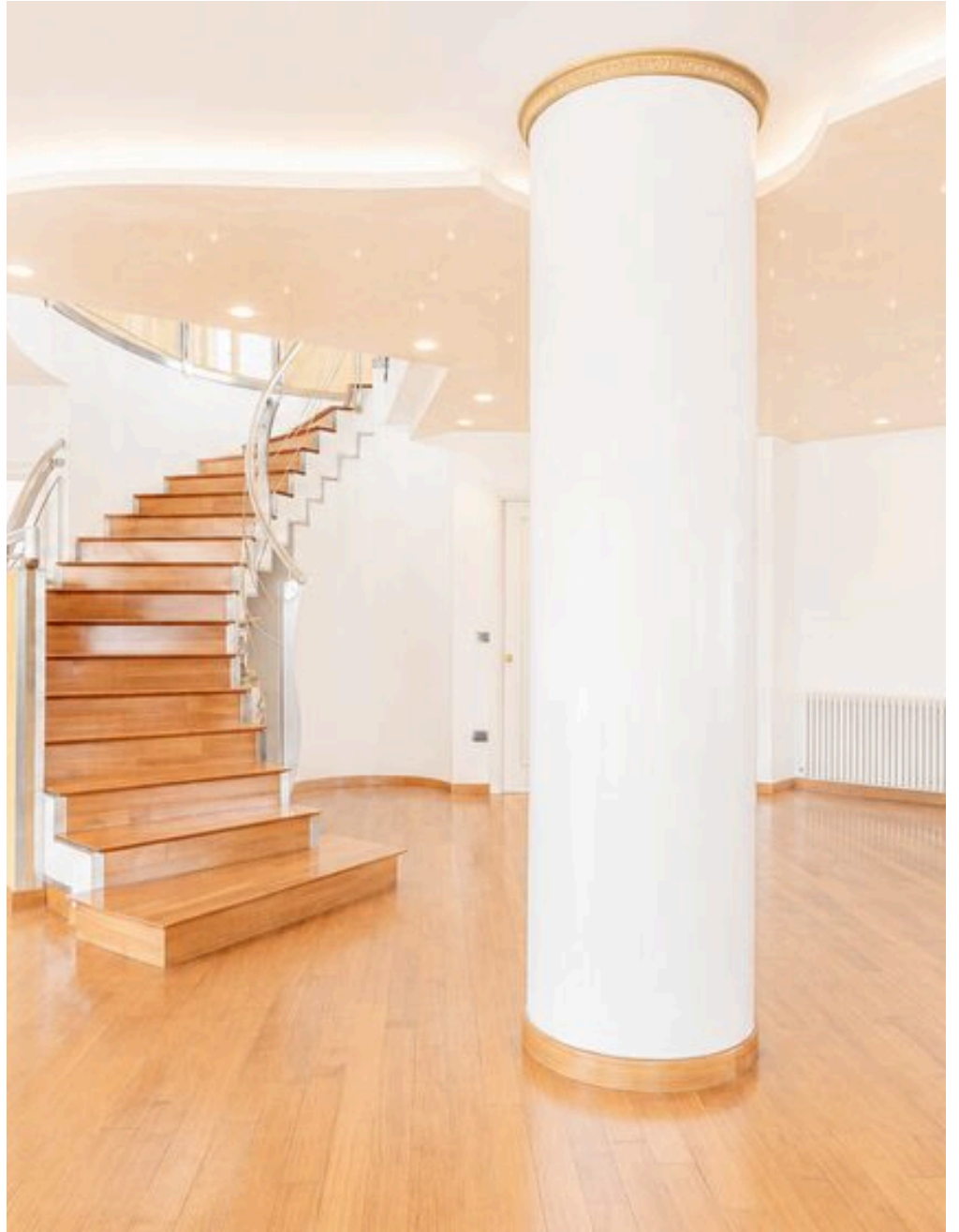
PRICE

437 m²

SQUARE METRES

5

ROOMS





DESCRIPTION


Exclusive Duplex Penthouse


A prestigious duplex penthouse with unparalleled space—an exclusive residence where light, privacy, and large panoramic terraces take center stage. Located on Via Cristoforo Colombo and equipped with an elevator, it stands out for the extraordinary size of its indoor and outdoor spaces. On the third floor, the entrance opens onto a grand and spacious living room featuring large floor-to-ceiling windows that lead directly to the corner sun terraces surrounding the property. The outdoor spaces serve as a natural extension of the living area, perfect for al fresco dining, moments of relaxation, and experiencing the home in complete harmony with the outdoors. The separate, generously sized eat-in kitchen offers a truly exceptional everyday living experience. Also on this floor are a bathroom and a room ideal as a study, guest room, or hobby area, as well as the majestic interior staircase leading to the upper level. The fourth floor represents the most exclusive heart of the penthouse: a space dedicated to comfort, well-being, and

privacy. We are greeted by a living area with access to spectacular panoramic terraces and a solarium that surround the home, providing natural light and open views from virtually every room in the house. The sleeping area features a first bedroom with an en suite bathroom, a small bedroom with direct access to the solarium, a spacious master bedroom enhanced by a true wellness area complete with a whirlpool tub, a hydromassage shower, and a sauna—designed to offer an exclusive wellness experience right in your own home—and a fourth bedroom, also equipped with a private bathroom. The property is complemented by practical, custom-built built-in closets, which further enhance the functionality of the spaces. The entire residence is characterized by exceptional natural light, airy rooms, and a harmonious layout, designed for those seeking a prestigious, elegant home that is virtually unmatched on the market. The property also includes a garage of approximately 40 square meters and a cellar of approximately 30 square meters.

 **437 m²**
AREA

 **5**
ROOMS

 **4**
BATHROOMS

 **€ 590.000**
PRICE

FEATURES



WIDE SPACES



OPPORTUNITY EXCLUSIVE POSITION



TERRACE



PANORAMIC VIEW



Agenzia Immobiliare Jappelli

CONTACTS

Book a visit

Contact us for more information or to schedule a viewing.



PHONE
+390498666706



EMAIL
info@jappelli.it



ADDRESS
Piazza Sacro Cuore 26, Abano Terme, Padova