



Lumina Luxury Estates

AGENCY — MADRID

Elegant apartment in the heart of Salamanca, Madrid

€ 0

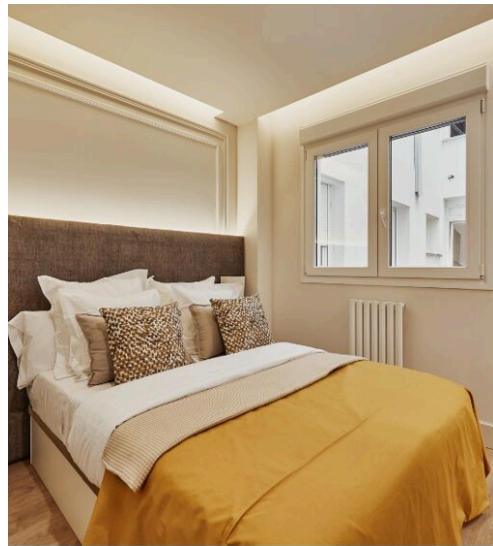
PRICE

—

SQUARE METRES

—

ROOMS



DESCRIPTION

Elegant apartment in the heart of Salamanca, Madrid

Lumina Luxury Estates presents an exclusive apartment of approximately 293 square meters located on the third floor of an elegant building in the heart of Salamanca. The property stands out for its spacious layout and functional design. The sleeping area includes four double bedrooms, and the apartment features five full bathrooms. There is also a staff room with a private bathroom, ideal for domestic staff or as a separate guest suite. The residence offers a fully equipped separate

kitchen, a dedicated laundry room, and a practical walk-in closet. Amenities are rounded out by central heating, ducted air conditioning, a modern home automation system, and a storage room/cellar. One of the apartment's highlights is its two terraces, perfect for enjoying moments of relaxation outdoors in the heart of one of the Spanish capital's most exclusive neighborhoods. A refined property, ideal for those seeking comfort, privacy, and a prime location in the center of Madrid.

 —
AREA

 —
BATHROOMS

 —
ROOMS

 € 0
PRICE



Lumina Luxury Estates

CONTACTS

Book a visit

Contact us for more information or to schedule a viewing.

 PHONE
0034611715045

 EMAIL
lumina.estates@gmail.com

 ADDRESS
Madrid, Madrid